



FACT SHEET

State Superfund Program

Receive Site Fact Sheets by *Email*. See "For More Information" to Learn How.

Site Name: Former Geneva Foundry
DEC Site #: C835027A
Address: 23 Jackson Street
Geneva, NY 14456

Have questions?
See
"Who to Contact"
Below

DEC ANNOUNCES CLEANUP OF NEIGHBORS NEAR FORMER GENEVA FOUNDRY TO START THIS SUMMER

The New York State Department of Environmental Conservation (DEC) is initiating cleanup of properties in neighborhoods adjacent to the Former Geneva Foundry Site (Site No. C835027A), located at 23 Jackson Street in Geneva, Ontario County (see attached Figures 1 and 2) beginning this summer. Based on the January 2017 Record of Decision, the cleanup will include removal of contaminated soil from residential and commercial parcels located near the former foundry.

Historic air emissions from the foundry contained lead and arsenic, the primary contaminants of concern. These emissions were deposited onto the soil in the surrounding area. A remedial design will be implemented on a property-specific basis to provide the details necessary to attain the remedial goals and successfully remove the contaminants from impacted properties.

Primarily residential properties, in addition to licensed day care facilities, closest to the foundry site, where soil contaminant concentrations are typically expected to be higher, will be prioritized. The first step in the remedial process involves development of individual cleanup plans which will be implemented on a property-specific basis to ensure the most effective cleanup possible. As participation in the remediation is voluntary and will only be conducted with the written permission of the property owner, DEC is encouraging targeted property owners to help expedite the process by granting permission for the state to access their properties to develop the necessary cleanup plans.

Letters targeting an initial group nearest to the former foundry are being mailed to property owners. The list of properties to be cleaned up in 2017 will be developed based on sampling results, access granted by property owners and conditions on-the-ground. Once permission has been granted, DEC will meet with property owners to review the remedial design and restoration plans for the properties. During construction, contaminated soils will be excavated and transported off-site for disposal at a permitted facility. Specific excavation depths will be identified during the remedial design, but are generally expected to within the top 2 feet of soil. Clean fill material will be brought in to restore the areas that are disturbed during the clean-up process to pre-remediation conditions.

DEC will also conduct additional soil sampling in previously un-sampled areas or properties where additional samples are required to determine whether elevated levels of contaminants of concern are present and warrant remediation. DEC will also be contacting the owners of these properties to obtain their written permission prior to performing this work.

This will be the first year of a multiyear cleanup effort. In future years, remedial construction activities will begin in the spring, and DEC will continue to adaptively manage the project as it progresses. The project will be funded and conducted pursuant to terms of the State Superfund program.

Additional site details, including environmental and health assessment summaries, are available on DEC's website at: <http://www.dec.ny.gov/chemical/107812.html>

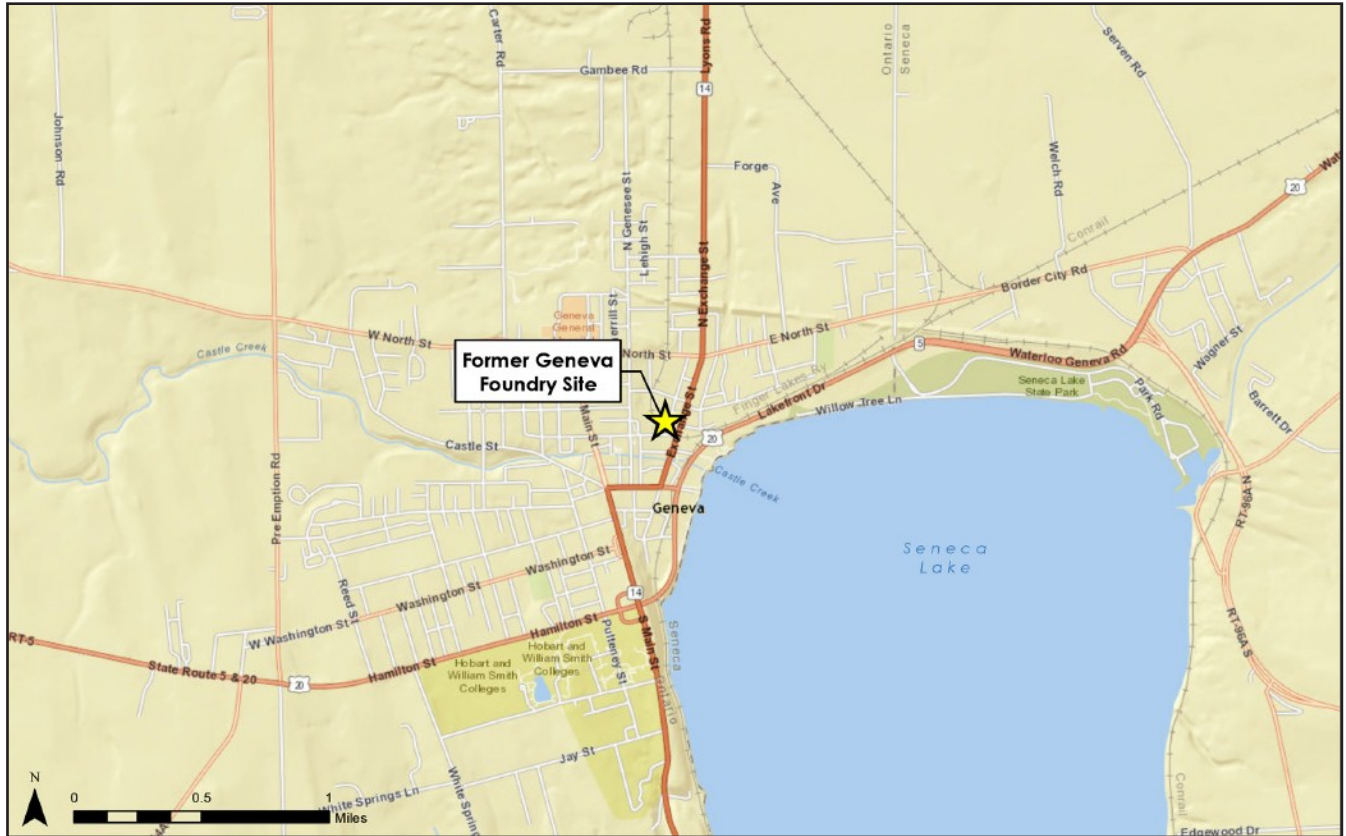


Figure 1
Site Location, Former Geneva Foundry Site
Site No. C835027A
Geneva, Ontario County, New York

State Superfund Program

New York's State Superfund Program (SSF) identifies and characterizes suspected inactive hazardous waste disposal sites. Sites that pose a significant threat to public health and/or the environment go through a process of investigation, evaluation, cleanup and monitoring.

NYSDEC attempts to identify parties responsible for site contamination and require cleanup before committing State funds.

For more information about the SSF, visit: <http://www.dec.ny.gov/chemical/8439.html>



Receive Site Fact Sheets by Email

Have site information such as this fact sheet sent right to your email inbox. NYSDEC invites you to sign up with one or more contaminated sites. County email listservs are available at the following web page: <http://www.dec.ny.gov/chemical/61092.html>. It's quick, it's free, and it will help keep you *better informed*.

As a listserv member, you will periodically receive site-related information/announcements for all contaminated sites in the county(ies) you select.

Note: Please disregard if you already have signed up and received this fact sheet electronically.

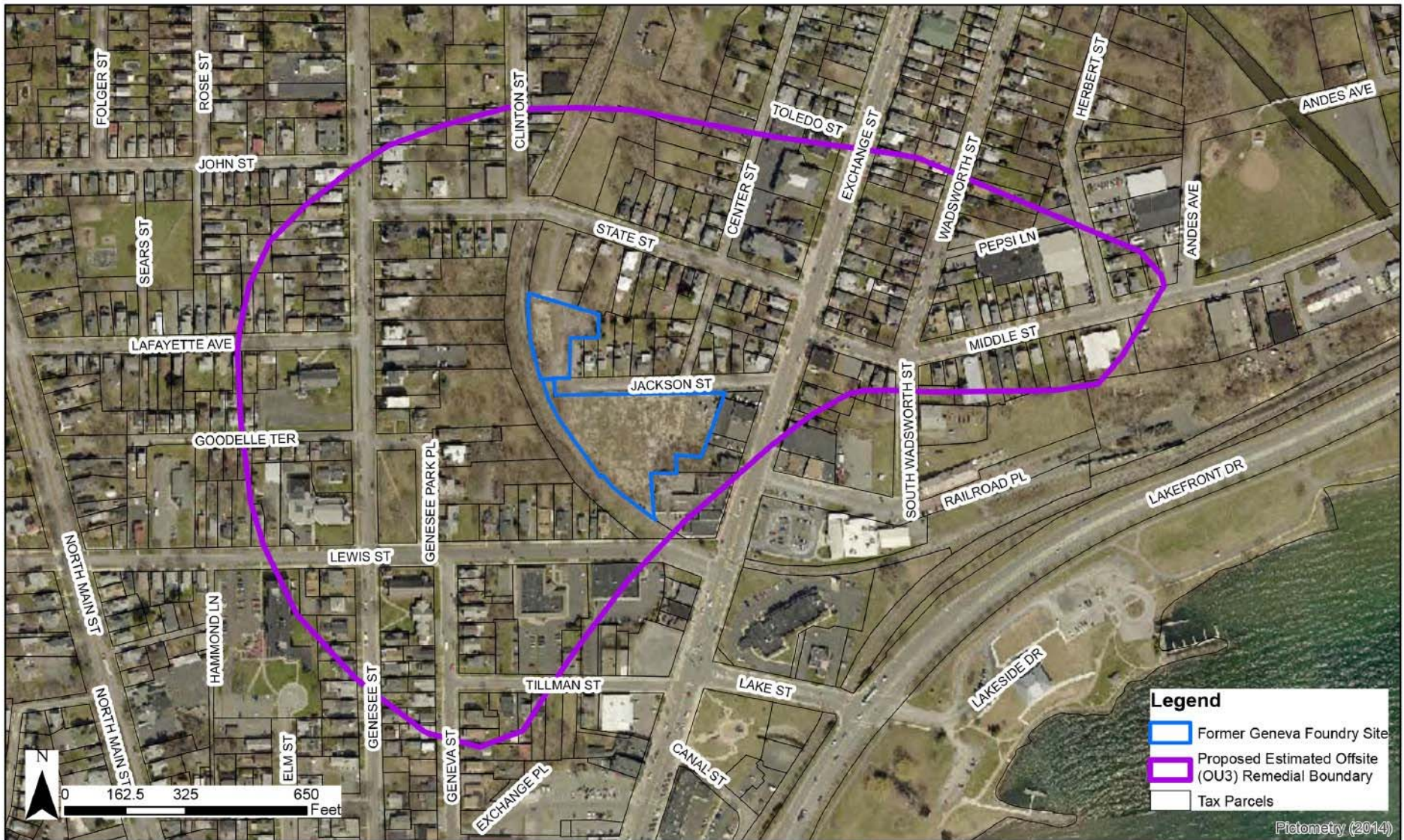


Figure 2
Former Geneva Foundry Site
and Estimated Offsite
Neighborhood Remedial
Boundary
Site No. C835027A
Geneva, Ontario County, New York

NEW YORK STATE DEPARTMENT OF ENVIRONMENTAL CONSERVATION
DIVISION OF ENVIRONMENTAL REMEDIATION
625 BROADWAY
ALBANY, NY 12233-7017

FOR MORE INFORMATION

Where to Find Information

Project documents are available at the following location(s) to help the public stay informed.

Geneva Free Library

244 Main Street
Geneva, New York 14456
Phone: 315-789-5303

DEC Region 8 Office

6274 East Avon-Lima Road
Avon, New York 14414
Phone: 585-226-5353
Please call for an appointment.

Additional site details, including environmental and health assessment summaries, are available on DEC's website at:

<http://www.dec.ny.gov/chemical/107812.html>

WHO TO CONTACT:

Comments and questions are always welcome and should be directed as follows:

Remedial Design and Construction Questions Related to the Neighborhood Cleanup:

David Chiusano, Project Manager
*Department of Environmental Conservation
Division of Environmental Remediation*
625 Broadway, 12th Floor
Albany, NY 12233-7017
Phone: 518-402-9813
david.chiusano@dec.ny.gov

Site-Related Health Questions:

Anthony Perretta
*State Department of Health
Bureau of Environmental Exposure Investigation*
Corning Tower, Room 1787
Albany, NY 12237
Phone: 518-402-7860
email: bee@health.state.ny.us



We encourage you to share this fact sheet with neighbors and tenants, and/or post this fact sheet in a prominent area of your building for others to see.

